

5 Days Uganda Budget Safari



Hi There ,

Experience Chimpanzee trekking in Kibale forest & Trekking the Famous Silver Back Mountain Gorillas in Bwindi and Much More...

Tour : Uganda Budget Safari

Duration : 5 Days

Countries : Uganda

Destinations :

Kibale National Park, Bwindi Impenetrable Forest National Park & Entebbe

Your journey mapped out:

Day 1: Entebbe to Kibale National Park

16-Jan-2025 Kibale Forest Camp | [Uganda](#)

Day 2: Chimp trekking in Kibale forest

17-Jan-2025 Kibale Forest Camp | [Uganda](#)

Day 3: Kibale to Bwindi Impenetrable National park

18-Jan-2025 Gorilla Valley Lodge | [Uganda](#)

Day 4: Gorilla Trekking in Bwindi Forest

19-Jan-2025 Gorilla Valley Lodge | [Uganda](#)

Day 5: Bwindi to Entebbe International Airport for your evening flight back home

20-Jan-2025

YOUR EXPEDITION STARTS HERE

⋮

Day 1:

16-Jan-2025

OVERNIGHT & MEAL PLAN

Kibale Forest Camp

Entebbe to Kibale National Park

In the morning, our experienced safari guide will collect you from your accommodation in Entebbe or at the airport and begin the trip to Kibale National Park. On the way to the lodge, you may choose to visit the crater lakes as an optional activity, providing magnificent scenic vistas.

DAY ACTIVITIES

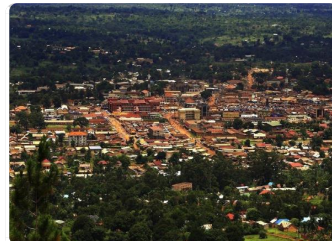
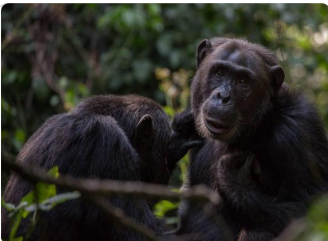
=> Transfer To Kibale Forest National Park



LOCATION : Kibale National Park

ROOM TYPE: STANDARD

MEALS PLAN: FB - Dinner, Breakfast and Lunch



EXPLORE KIBALE NATIONAL PARK

Day 2:

17-Jan-2025

OVERNIGHT & MEAL PLAN

Kibale Forest Camp

Chimp trekking in Kibale forest

Once you have had breakfast, proceed to Kanyanchu park headquarters, where a park ranger guide will provide you with an orientation on the park's guidelines. Embark on a trek through the luxuriant tropical forest to spot the frequently sighted chimpanzees. Upon completing the trek, have lunch back at the lodge, and then head over to Bigodi wetland for a brief visit. Afterward, take a stroll through the nearby village

DAY ACTIVITIES

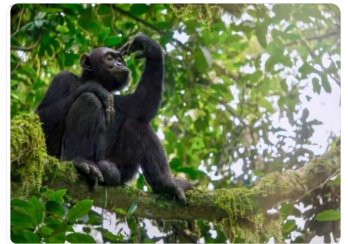
- => Chimpanzee Tracking In Kibale National Park
- => Bigodi Walk Kibale Forest



LOCATION : Kibale National Park

ROOM TYPE: STANDARD

MEALS PLAN: FB - Dinner, Breakfast and Lunch



CONTINUE TO BWINDI IMPENETRABLE FOREST NATIONAL PARK

Day 3:

18-Jan-2025

OVERNIGHT & MEAL PLAN

Gorilla Valley Lodge

Kibale to Bwindi Impenetrable National park

After breakfast at the lodge, proceed with the adventure to Bwindi Impenetrable National Park, Home to Mountain gorillas.

DAY ACTIVITIES

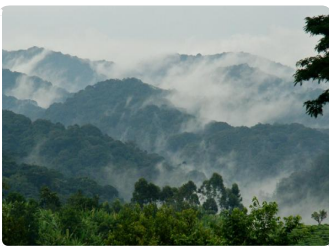
=> Transfer To Bwindi Impenetrable Forest



LOCATION : Bwindi Impenetrable Forest National Park

ROOM TYPE: STANDARD

MEALS PLAN: FB - Dinner, Breakfast and Lunch



Day 4:

19-Jan-2025

OVERNIGHT & MEAL PLAN

Gorilla Valley Lodge

Gorilla Trekking in Bwindi Forest

After breakfast, proceed to the park headquarters where you will receive a briefing about the upcoming activity. With the guidance of an experienced park ranger, embark on a journey deep into the misty forest in search of the awe-inspiring mountain gorillas.

DAY ACTIVITIES

=> Gorilla Trekking In Bwindi Forest



LOCATION : Bwindi Impenetrable Forest National Park

ROOM TYPE: STANDARD

MEALS PLAN: FB - Dinner, Breakfast and Lunch



Day 5:

20-Jan-2025

Bwindi to Entebbe International Airport for your evening flight back home

After breakfast at the lodge, checkout and start the long journey back to Entebbe. There will be stopovers for lunch, scenery viewing and stretching.

The distance is approximately 500 kilometers with estimated drive time of around 7-9 hours, depending on traffic and road conditions.

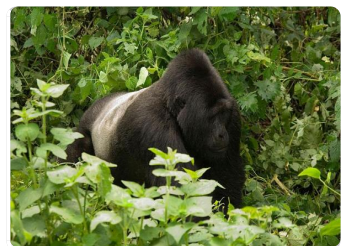
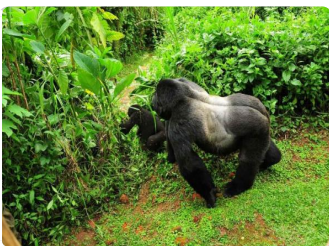
Alternatively, there are flights available from Kihihi or Kisoro Airstrip (located near Bwindi) to Entebbe International Airport, which takes approximately 1-2 hours.

From Entebbe you will proceed to Entebbe International Airport for your evening flight back home.

DAY ACTIVITIES

=> Transfer To Entebbe

=> Entebbe To Entebbe Airport





What is Included & Excluded

What's Included

Itinerary is quoted in USD per person Sharing
4x4 Specialized Pop Up Roof Land Cruiser
Professional English Speaking Guide
Water, Coffee and Tea on Safari
Lunch
1 chimpanzee trekking permit per person
1 gorilla trekking permit per person
Medical Evacuation
Airport Transfer
All Accommodation and Meals as Specified on the Itinerary

What's Excluded

All Entry Visa
Travel Insurance
Tips and Gratuities
Any Sight seeing not on the itinerary
Laundry
Optional Activities
Any Item of Personal Nature
Anything not specified in the itinerary
International Flights