



## Hi JONAITYTE X 6 ,

Experience Chimpanzee trekking in Kibale forest, Queen Elizabeth National park with its famous boat cruise on the Kazinga Channel and 4 of the Big 5 game drive experience & Trekking the Famous Silver Back Mountain Gorillas in Bwindi and Much More...

**Tour** : Paradize Uganda

**Duration** : 11 Days

**Countries** : Uganda

**Destinations** :

Entebbe, Kibale National Park, Queen Elizabeth National Park, Bwindi Impenetrable Forest National Park & Nairobi City

## Your journey mapped out:

**Day 1: Entebbe Airport to Entebbe**

24-Jul-2025 Lake Victoria Serena Golf Resort & Spa | Uganda

**Day 2: Entebbe to Kibale National Park**

25-Jul-2025 Primate Lodge | Uganda

**Day 3: Chimp trekking in Kibale forest**

26-Jul-2025 Primate Lodge | Uganda

**Day 4: Kibale to Queen Elizabeth National park**

27-Jul-2025 Mweya Safari Lodge | Uganda

**Day 5 - 6: Full Day Queen Elizabeth Experience**

28-Jul-2025 Mweya Safari Lodge | Uganda

**Day 7: Queen Elizabeth National Park to Bwindi Impenetrable National Park via Kabale**

30-Jul-2025 Four Gorillas Lodge | Uganda

**Day 8: Gorilla Trekking in Bwindi Forest**

31-Jul-2025 Four Gorillas Lodge | Uganda

---

**Day 9: Bwindi Flight to Entebbe**

01-Aug-2025 Lake Victoria Serena Golf Resort & Spa | Uganda

---

**Day 10: Free Day At Entebbe**

02-Aug-2025 Lake Victoria Serena Golf Resort & Spa | Uganda

---

**Day 11: Transfer to Entebbe Airport for flight to Nairobi Airport**

03-Aug-2025

---

YOUR EXPEDITION STARTS HERE

⋮

## Day 1:

24-Jul-2025

### Entebbe Airport to Entebbe

Your guide/driver will pick you up from Entebbe Airport and provide a brief before transferring you to your accommodation in Entebbe about a 30 min drive. You can spend the night there and prepare for your adventure safari.

#### DAY ACTIVITIES

=> Entebbe Airport To Entebbe

### OVERNIGHT & MEAL PLAN

## Lake Victoria Serena Golf Resort & Spa



LOCATION : Entebbe

ROOM TYPE: Standard Deluxe Room

MEALS PLAN: FB - Dinner, Breakfast and Lunch



CONTINUE TO KIBALE NATIONAL PARK

## Day 2:

25-Jul-2025

## OVERNIGHT & MEAL PLAN

### Primate Lodge

#### Entebbe to Kibale National Park

In the morning, our experienced safari guide will collect you from your accommodation in Entebbe or at the airport and begin the trip to Kibale National Park. On the way to the lodge, you may choose to visit the crater lakes as an optional activity, providing magnificent scenic vistas.

#### DAY ACTIVITIES

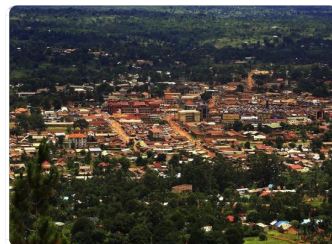
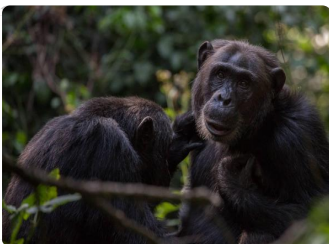
=> Transfer To Kibale Forest National Park



**LOCATION :** Kibale National Park

**ROOM TYPE:** Luxury Cottages

**MEALS PLAN:** FB - Dinner, Breakfast and Lunch



EXPLORE KIBALE NATIONAL PARK

## Day 3:

26-Jul-2025

## OVERNIGHT & MEAL PLAN Primate Lodge

### Chimp trekking in Kibale forest

Once you have had breakfast, proceed to Kanyanchu park headquarters, where a park ranger guide will provide you with an orientation on the park's guidelines. Embark on a trek through the luxuriant tropical forest to spot the frequently sighted chimpanzees. Upon completing the trek, have lunch back at the lodge, and then head over to Bigodi wetland for a brief visit. Afterward, take a stroll through the nearby village

### DAY ACTIVITIES

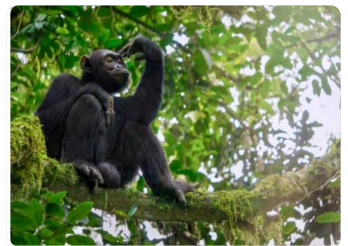
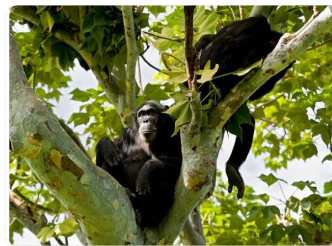
- => Chimpanzee Tracking In Kibale National Park
- => Bigodi Walk Kibale Forest



**LOCATION :** Kibale National Park

**ROOM TYPE:** Luxury Cottages

**MEALS PLAN:** FB - Dinner, Breakfast and Lunch



## Day 4:

27-Jul-2025

## OVERNIGHT & MEAL PLAN

### Mweya Safari Lodge

#### Kibale to Queen Elizabeth National park

On this day, you will embark on a scenic drive to Queen Elizabeth National Park, passing through local communities and observing their way of life, as well as viewing tea and banana plantations and some of the stunning crater lakes. The distance from Kibale to Queen Elizabeth National Park is approximately 157 kilometers, and the drive time is about 3 hours, depending on road conditions. You will arrive at the lodge in time for a delicious lunch.

#### DAY ACTIVITIES

- => Transfer To Queen Elizabeth National Park
- => Game Drive In Queen Elizabeth National Park



**LOCATION :** Queen Elizabeth National Park

**ROOM TYPE:** Classic Room

**MEALS PLAN:** FB - Dinner, Breakfast and Lunch



EXPLORE QUEEN ELIZABETH NATIONAL PARK

## Day 5 - 6:

28-Jul-2025

## OVERNIGHT & MEAL PLAN

### Mweya Safari Lodge

#### Full Day Queen Elizabeth Experience

Following an early breakfast, join the Uganda Carnivore Project for a morning game drive in the Kasenyi region of the park. Afterward, in the afternoon, embark on a boat excursion along the Kazinga Channel.

#### DAY ACTIVITIES

- => Game Drive In Queen Elizabeth National Park
- => Boat Safari On The Kazinga Channel



**LOCATION :** Queen Elizabeth National Park

**ROOM TYPE:** Classic Room

**MEALS PLAN:** FB - Dinner, Breakfast and Lunch



CONTINUE TO BWINDI IMPENETRABLE FOREST NATIONAL PARK

## Day 7:

30-Jul-2025

### Queen Elizabeth National Park to Bwindi Impenetrable National Park via Kabale

After having breakfast at the lodge, you will proceed with the safari to Bwindi Impenetrable National Park via Kabale which is approximately 250 kilometers with estimated of about 5-7 hours, depending on traffic and road conditions with a lunch stop over.

#### DAY ACTIVITIES

=> Transfer To Bwindi Impenetrable Forest

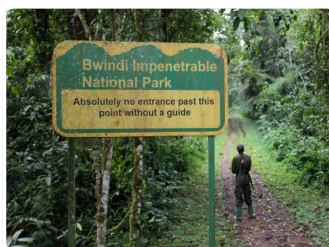
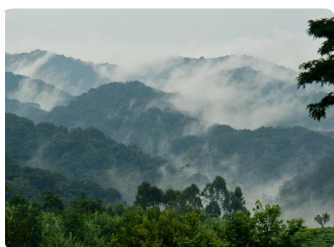
### OVERNIGHT & MEAL PLAN Four Gorillas Lodge



**LOCATION :** Bwindi Impenetrable Forest National Park

**ROOM TYPE:** Standard Room

**MEALS PLAN:** FB - Dinner, Breakfast and Lunch



## Day 8:

31-Jul-2025

## OVERNIGHT & MEAL PLAN

### Four Gorillas Lodge

#### Gorilla Trekking in Bwindi Forest

After breakfast, proceed to the park headquarters where you will receive a briefing about the upcoming activity. With the guidance of an experienced park ranger, embark on a journey deep into the misty forest in search of the awe-inspiring mountain gorillas.

#### DAY ACTIVITIES

=> Gorilla Trekking In Bwindi Forest



**LOCATION :** Bwindi Impenetrable Forest National Park

**ROOM TYPE:** Standard Room

**MEALS PLAN:** FB - Dinner, Breakfast and Lunch



■  
■  
CONTINUE TO ENTEBBE  
■  
■

## Day 9:

01-Aug-2025

### OVERNIGHT & MEAL PLAN

## Lake Victoria Serena Golf Resort & Spa

### Bwindi Flight to Entebbe

After breakfast, you will be transferred to Kisoro Airstrip for your flight to Entebbe. Arriving at Entebbe you will be picked up at the airport and transferred to your accommodation in Entebbe.

#### DAY ACTIVITIES

=> Entebbe Airport To Entebbe

#### DAY FLIGHTS

DEPT: 8:25 FROM: Kisoro Airstrip  
ARRV: 11:25 TO: Entebbe International airport



LOCATION : Entebbe

ROOM TYPE: Standard Deluxe Room

MEALS PLAN: FB - Dinner, Breakfast and Lunch



■  
■  
EXPLORE ENTEBBE  
■  
■

# Day 10:

02-Aug-2025

## Free Day At Entebbe

Enjoy and unwind with a relaxing day at Entebbe.

### DAY ACTIVITIES

## OVERNIGHT & MEAL PLAN

### Lake Victoria Serena Golf Resort & Spa



**LOCATION :** Entebbe  
**ROOM TYPE:** Standard Deluxe Room  
**MEALS PLAN:** FB - Dinner, Breakfast and Lunch



EXPLORE ENTEBBE

Day 11:

03-Aug-2025

## Transfer to Entebbe Airport for flight to Nairobi Airport

You will be picked up at your Accommodation at Entebbe and transferred to Entebbe International Airport for your flight to Jomo Kenyatta International Airport (Kenya). Upon Arrival at Jomo Kenyatta Airport, you will be meet by your guide/driver and transferred to your Accommodation in Nairobi.

NOTE: International Flight Not Included!

### DAY ACTIVITIES

- => Entebbe To Entebbe Airport
- => Transfer From Nairobi Airport



YOU'VE REACHED THE END OF YOUR ADVENTURE



## What is Included & Excluded

### What's Included

---

Itinerary is quoted in USD per person Sharing  
4x4 Specialized Pop Up Roof Land Cruiser  
Professional English Speaking Guide  
Water, Coffee and Tea on Safari  
Lunch  
All Park Fees and Activities as per Itinerary  
Airport Transfer

### What's Excluded

---

All Entry Visa  
Travel Insurance  
Tips and Gratuities  
Any Sight seeing not on the itinerary  
Laundry  
Optional Activities  
Any Item of Personal Nature  
Anything not specified in the itinerary  
International Flights